

SINGLE LIMB WELL TYPE MANOMETER

INTRODUCTION

FITZER' Single Limb Well Type Direct Reading Manometer for the precision measurement of pressure, vacuum, differential pressure flow and liquid level measurement. The well type single limb manometer are accurate & dependable as well as highly versatile for many applications. The Manometer is available as either single tube or multiple tube. All scales are graduated to correct for the drop in the well level.

GENERAL SPECIFICATION

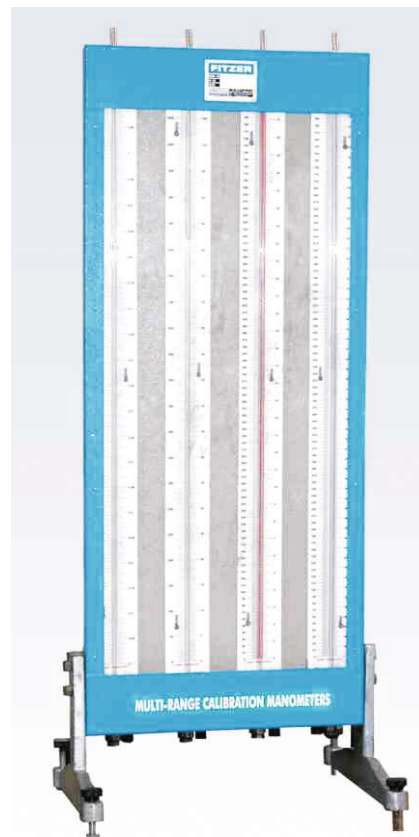
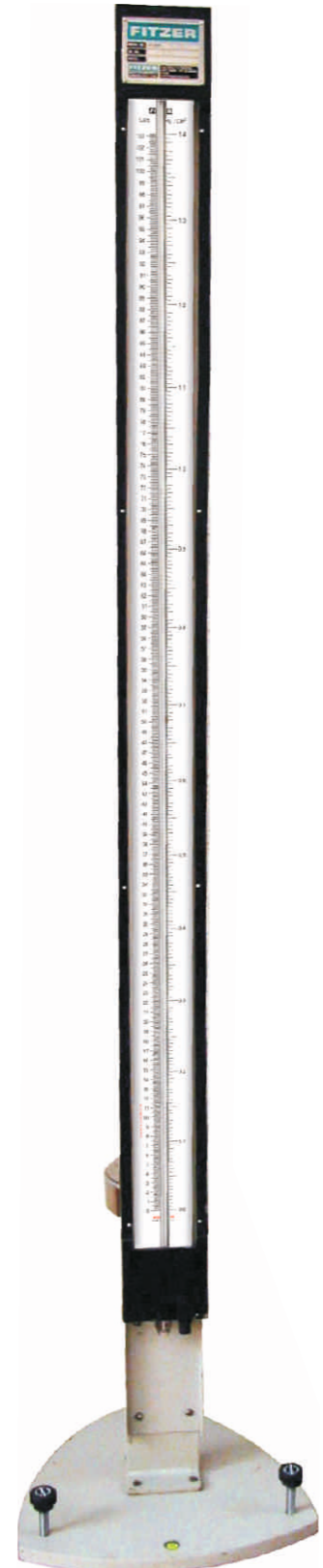
CASING	M.S. /Aluminium Casing from three side and aluminium cover with transparent acrylic front.
METERING TUBE FINISHING	Special uniform bore thick walled borosilicate glass tube
PACKING	Industrial Grade painted / Powder coated Teflon / Neoprene.
SCALE RANGE	Scale milky white PVC with Black colour Lining and figures mm of Wc / mm of Hg / Inches /mBar / Kpa / Pa OR Calibrated Scale using with different Sp. Gr. Fluid
MANOMETRIC FLUID	Water / Mercury / ATB Liquid Sp. gr. 2.96
WETTED PART	M.S., Aluminium, SS, PP, PVC.
END CONNECTION	1/4" BSP /NPT (F) OR Nozzle Type
MOUNTING ARRANGEMENT	Wall Panel / Flush OR Stand Mounting
ACCURACY	Drain Plug, Filling Plug, Zero Adjusting Knob +/-0.25% , +/- 0.1% of F.S.D. OR Better.
TEST PRESSURE	1.5 Time of Operating Pressure
MAX. TEMPERATURE	90 deg C, Extra depend on Manometric Fluid

Range in mm	L inches	W inches	H inches
0-200	16	3.25	1.5
0-300	20	"	"
0-400	24	"	"
0-500	28	"	"
0-800	39	"	"
0-1000	48	"	"
0-1250	58	"	"
0-1500	68	"	"
0-2000	88	"	"
0-2500	108	"	"
0-3000	128	"	"

Code no.	Extra If Required
MT	Mounting Stand
OC	Overload Chamber
CV	Check Valve
CP	Catch Pot
TVM	Three Valve Manifold
FVM	Five Valve Manifold
VA	Vernier Arrangement
AP	Aspirator Pump

Above given sizes are approx in inches, change if extra accessories add or change in scale range.

MODEL : FITZER / SL / 200



MULTIPLE SINGLE LIMB MANOMETER